

# Service Delivery Data Collection



Together For Prosperity  
2016 - 2021

## AMAHLATHI LOCAL MUNICIPALITY



# MESSAGE FROM THE MAYOR



It is approximately 20 years since the amalgamation and birth of Amahlathi Local Municipality. During the two decades the municipality has seen about four administrations each with a five year term. I must also admit that there is a lot that has not been down which is key to the needs of our people. Some of our people still do not have electricity, shelter and most of all they are victims of the triple challenge. Poverty and unemployment is still the order of the day in many areas affecting mostly the youth. Inequality completes the triple challenge locally

This ending term is the 4<sup>th</sup> administration of Amahlathi Local Municipality and it began following the 2016 local government elections.

The first half of the term began with high enthusiasm and key to that was the identification of problems within the municipality. Major decisions were taken towards changing the financial problems foreseen by the council at the time however the process proved to lack effective consultation as a result it provoked labour unrest.

The unrest was followed by community protests that saw municipal buildings torched. That instability brought the municipality to its knees for about five months.

The municipality was soon after that subjected to section 139 for a period of nine months. There after it was almost the end of the term.

This term began with other problems that come with the demarcation process, through demarcation Amahlathi Local Municipality lost about 5 wards to Buffalo City Metro and Intsika Yethu Local Municipality.

The municipality as a result of the reduction of wards received a lower equitable share. This was aggravated by the implementation of standardization by the third administration.

A lower revenue base against hiking employee cost created serious cash flow problems which meant the municipality had to delay salary payments in certain months.

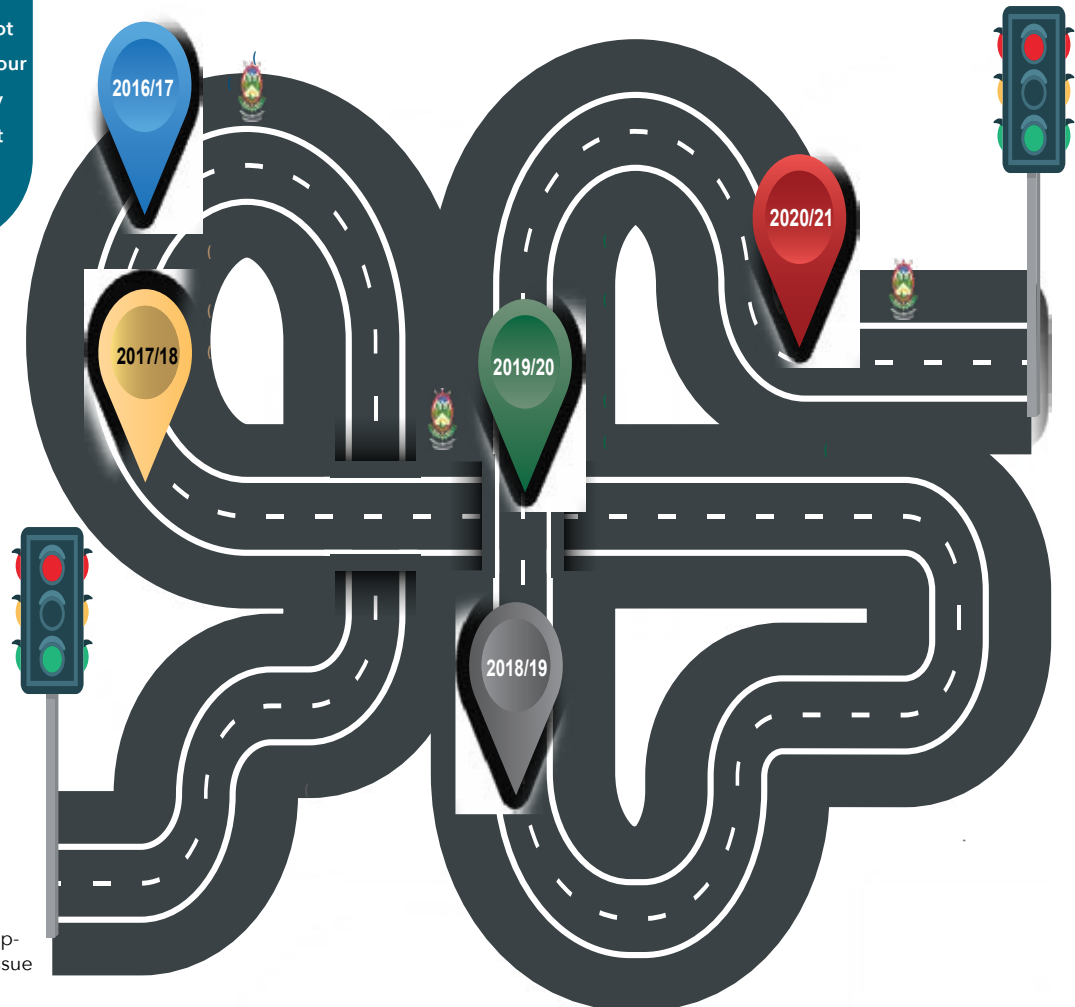
Given all the challenges highlighted above Council did not postpone its duty to serve its people. This booklet is a summarised account of work done by the council over the two decades.

Under this administration, as if there were no obstacles, Council managed to improve road infrastructure, waste management facility, facilitate housing project and commence with a Sports Facility in Mlungisi and Keiskammahoek Fire Station amongst many other projects detailed in this volume.

The new Council is required to make its own assessment of the work done in order to establish what needs to be done next. Amongst those it would be the implementation of the electricity master plan, implementation of the development plans that we approved and procured and to fix the issue of cash flow problems.

.....

CLLR A HOBO (MAYOR)



# VISION & MISSION OF THE AMAHLATHI LOCAL MUNICIPALITY



1

Amahlathi Municipality, as an integrated unit, shall become the model for community empowerment,

2

Decentralised participative management,

3


A transformed and proactive municipality.

## IN STRIVING TO ACHIEVE THIS VISION, AMAHLATHI'S MISSION IS TO:

- ✓ Partner with its community to create sustainable and better services for all
- ✓ Emphasise on better usage of municipal resources
- ✓ Provide infrastructure and build investor confidence




# BASIC SERVICE DELIVERY IN NUMBERS



**UNQUALIFIED AUDIT OPINION FOR  
16-17 | 17-18 | 19-20 FINANCIAL YEARS**


**3**

**2018 -2019 FINANCIAL YEAR  
WAS AFFECTED BY UNRESTS**




**SMME'S CAPACITATED**

**52**



**EPWP WORK OPPORTUNITIES CREATED**

**681**



**Budget**


**10%**

**OF THE AMAHLATHI'S  
PROCUREMENT EXPENDITURE  
BENEFITS  
LOCAL SMMEs**



**FARMERS PROVIDED WITH MAIZE SEEDS**

**515**



**BASIC SERVICE DELIVERY &  
INFRASTRUCTURE DEVELOPMENT**

**15 WARDS**

**BENEFITTED FROM CAPITAL  
PROGRAMME PROJECTS  
PER WARD**

**Capital Programme by Project by Ward: Year 16/17**

AREA	WARD
Freshwater Internal Roads	9
Madubela Internal Roads	10
White City Internal Roads	15
Phumlani Internal Roads	12
Jerseyville Internal Roads	9
Chris Hani Roads	14
2400 square meters of pedestrian walkways constructed at Keiskammahoek	1
<b>ECONOMIC DEVELOPMENT</b>	
Erection of Hawker Stalls in Cathcart	4
<b>SPORTS, ARTS &amp; CULTURE</b>	
Mlungisi Sportsfield PH 1 & 2	15

**Capital Programme by Project by Ward: Year 16/17**

AREA	WARD
<b>Electricity</b>	
<b>BUSHPIG UPGRADE</b>	13
40% upgraded network from 300KVA to 5000KVA at Cathcart substation	
<b>Highmast Lights</b>	
Masinedane, 2016/17	1
Ethembeni, 2016/17	7
Cathcart 2016/17	4
Toise 2016/17	5
Ethembeni 2017/18	h
Frankfort 2017/18	12
Toise 2017/18	5
Cenyulands 2017/18	15
Cenyulands extension 2017/18	15
Mzamo 2017/18	14
Gubevu 2017/18	12

### Capital Programme by Project by Ward: Year 17/18

AREA	WARD
Laangdraai Internal Roads	4
Rawini Internal Roads	5

### Capital Programme by Project by Ward: Year 2018/2019

AREA	WARD
ETHEMBENI INTERNAL ROADS PH 3	7
KEI ROAD INTERNAL ROADS	8
NOTHENGGA INTERNAL ROADS	12
RHAWINI INTERNAL ROADS	5
LANGDRAI INTERNAL ROADS	4
ZINGCUKA INTERNAL ROADS	1
RABHULA INTERNAL ROADS	3
GXULU INTERNAL ROADS	1
CATA INTERNAL ROADS	2
KHAYELITSHA INTERNAL ROADS	8
LOWER XHOLORHA SURFACING	13
MLUNGISI SURFACING	14

## Capital Programme by Project by Ward: Year 2019/2020

AREA	WARD
Gubevu Internal Roads	12
Border Post Internal Roads	8
Sophumelela Internal Roads	1
Keiskammahoek Paving	1
Keiskammahoek Fire Station	1
Construction of Nothenga Hall	12



**SERVICE DELIVERY  
MILESTONES 2016-2021**



# **BASIC SERVICE DELIVERY IN PICTURES**







# AMATOLAVILLE PAVING





# CENYU HOUSES HANDOVER

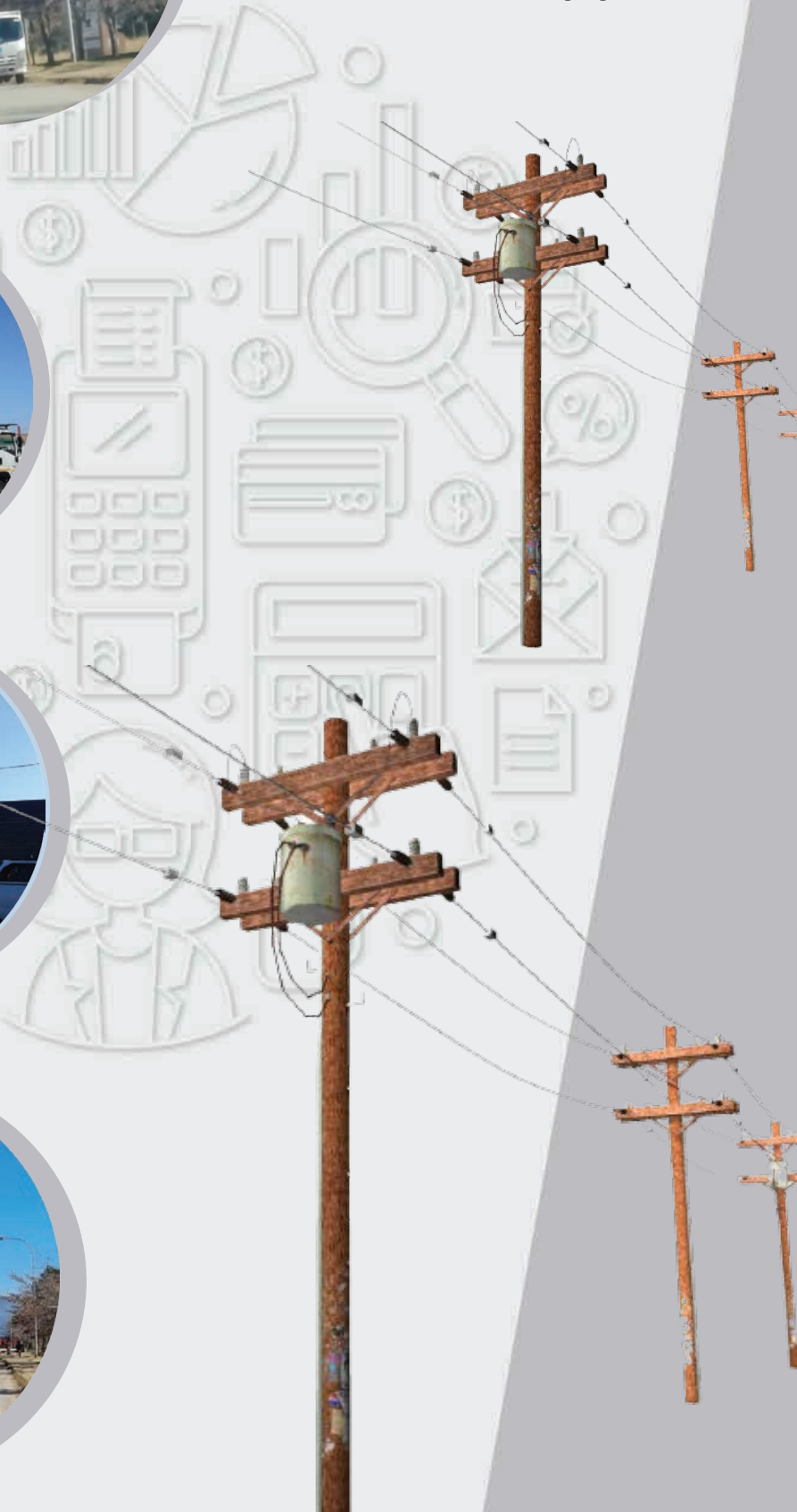
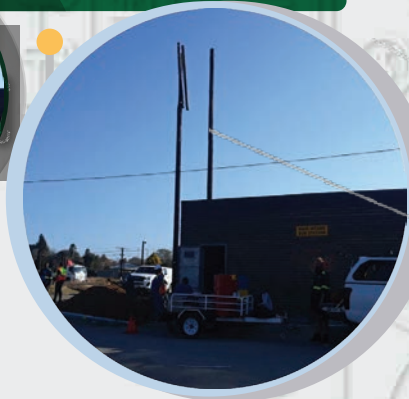








# ELECTRICITY INFRASTRUCTURE UPGRADE





# YOUTH IN AGRICULTURE



**GUBU DAM**

**FOREST WAY HIKING TRAIL**

**DHONE AGRICULTURAL DEVELOPMENT**

**CHAMPION TREE**

**PLACES  
OF  
INTEREST**

For more information on sites and accommodation visit:  
[www.amahlathi.gov.za](http://www.amahlathi.gov.za)

**BASIC SERVICE**

**DELIVERY &**

**INFRASTRUCTURE**

**DEVELOPMENT**

**2016 - 2021**



*Keiskammahoek Fire Station*



*Amatolaville Paving*



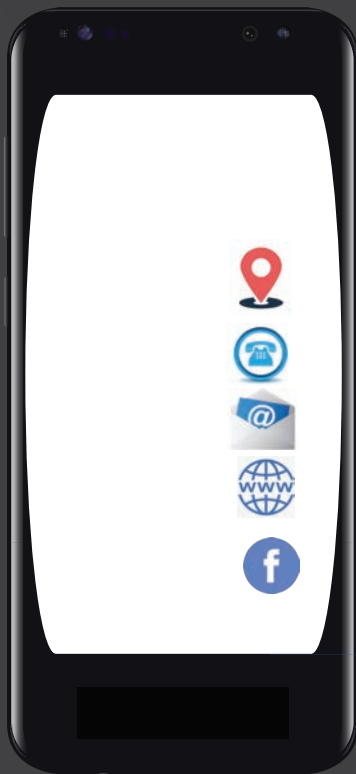
*Gubevu Internal Road*



*Mlungisi Paving*



# AMAHLATHI LOCAL MUNICIPALITY



## CONTACT US

1

12 Cnr Brownlee & Dragon Street, Stutterheim

2

During Office Hours  
043 683 5000

3

Email: [info@amahlathi.gov.za](mailto:info@amahlathi.gov.za)

4

[www.amahlathi.gov.za](http://www.amahlathi.gov.za)

5

[facebook.com/Amahlathi Municipality](https://facebook.com/AmahlathiMunicipality)